



Goodlux is a full-service collaborative architectural, interior design, and lighting consultancy studio with head office in Bangkok, Thailand. Established in 2012, the studio has developed more than 100 awe-inspiring projects across Asia, ranging from residential to commercial.

CORPORATE DESIGN



CHASE OFFICE

Project: Chase Office
Location: Chaengwattana
Area: approx 3,000 sq.m.
Year: 2020
Status: Under construction



CHASE OFFICE

Project: Chase Office
 Location: Chaengwattana
 Area: approx 3,000 sq.m.
 Year: 2020
 Status: Under construction





CHASE OFFICE

Project: Chase Office
 Location: Chaengwattana
 Area: approx 3,000 sq.m.
 Year: 2020
 Status: Under construction





CHASE OFFICE

Project: Chase Office
 Location: Chaengwattana
 Area: approx 3,000 sq.m.
 Year: 2020
 Status: Under construction





CHASE OFFICE

Project: Chase Office
 Location: Chaengwattana
 Area: approx 3,000 sq.m.
 Year: 2020
 Status: Under construction





CHASE OFFICE

Project: Chase Office
 Location: Chaengwattana
 Area: approx 3,000 sq.m.
 Year: 2020
 Status: Under construction

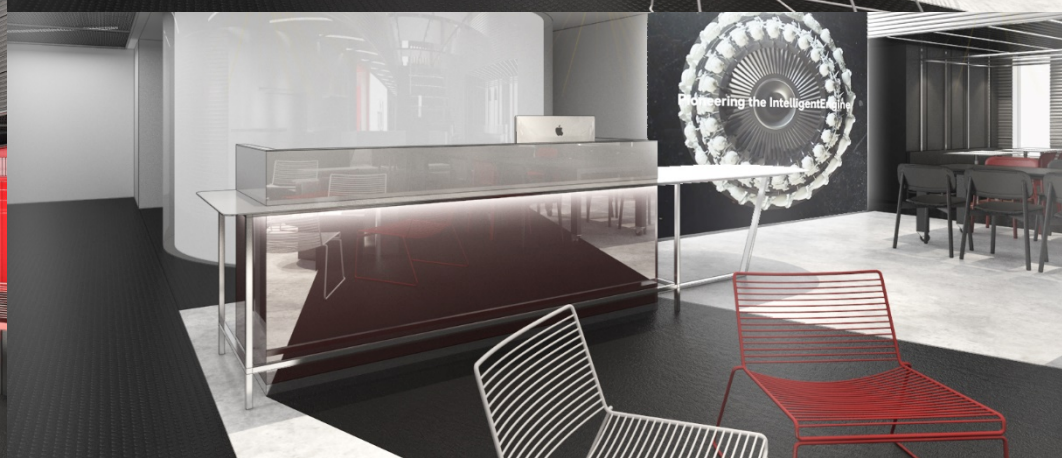




OGILVY OFFICE

Project: Ogilvy Office
Location: Central World
Area: approx 500 sq.m.
Year: 2020
Status: Under construction





OGILVY OFFICE

Project: Ogilvy Office
 Location: Central World
 Area: approx 500 sq.m.
 Year: 2020
 Status: Under construction





OGILVY OFFICE

Project: Ogilvy Office
 Location: Central World
 Area: approx 500 sq.m.
 Year: 2020
 Status: Under construction





YSKIN OFFICE

Project: Yskin Office
 Location: Ramintra
 Area: approx 350 sq.m.
 Year: 2021
 Status: Design Development





YSKIN OFFICE

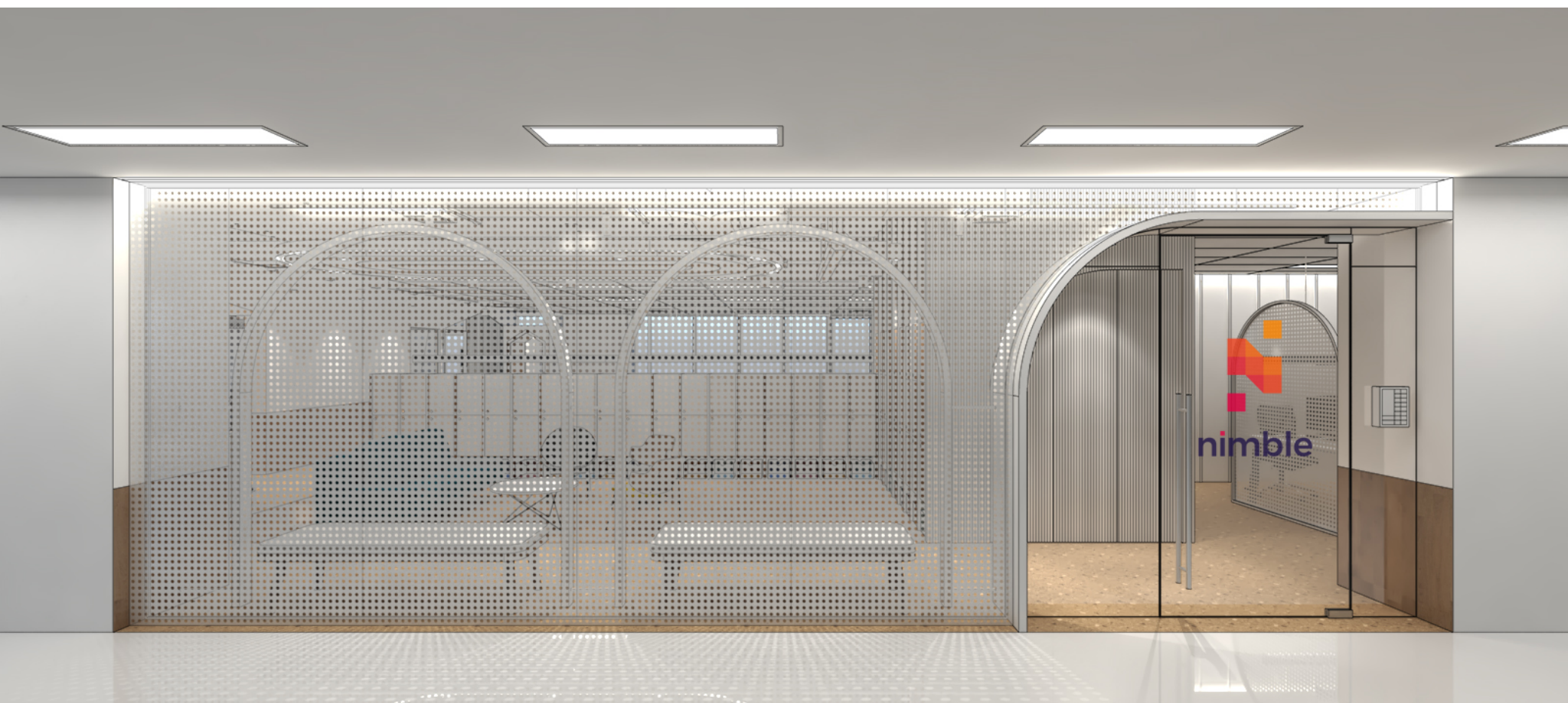
Project: Yskin Office
 Location: Ramintra
 Area: approx 350 sq.m.
 Year: 2021
 Status: Design Development





YSKIN OFFICE

Project: Yskin Office
Location: Ramintra
Area: approx 350 sq.m.
Year: 2021
Status: Design Development



NIMBLE HQ OFFICE

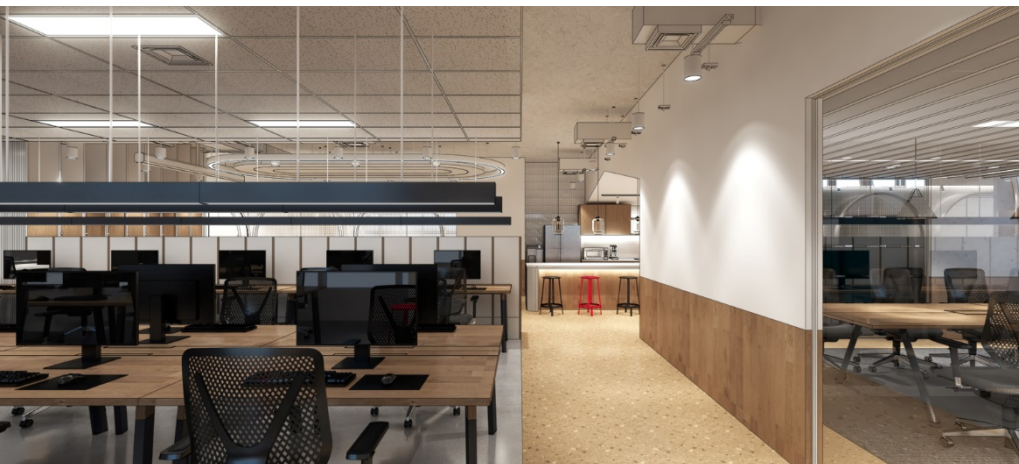
Project: Nimble HQ Office
Location: Exchange 21 Tower
Area: approx 500 sq.m.
Year: 2021
Status: Design Development



NIMBLE HQ OFFICE

Project: Nimble HQ Office
 Location: Exchange 21 Tower
 Area: approx 500 sq.m.
 Year: 2021
 Status: Design Development





NIMBLE HQ OFFICE

Project: Nimble HQ Office
 Location: Exchange 21 Tower
 Area: approx 500 sq.m.
 Year: 2021
 Status: Design Development

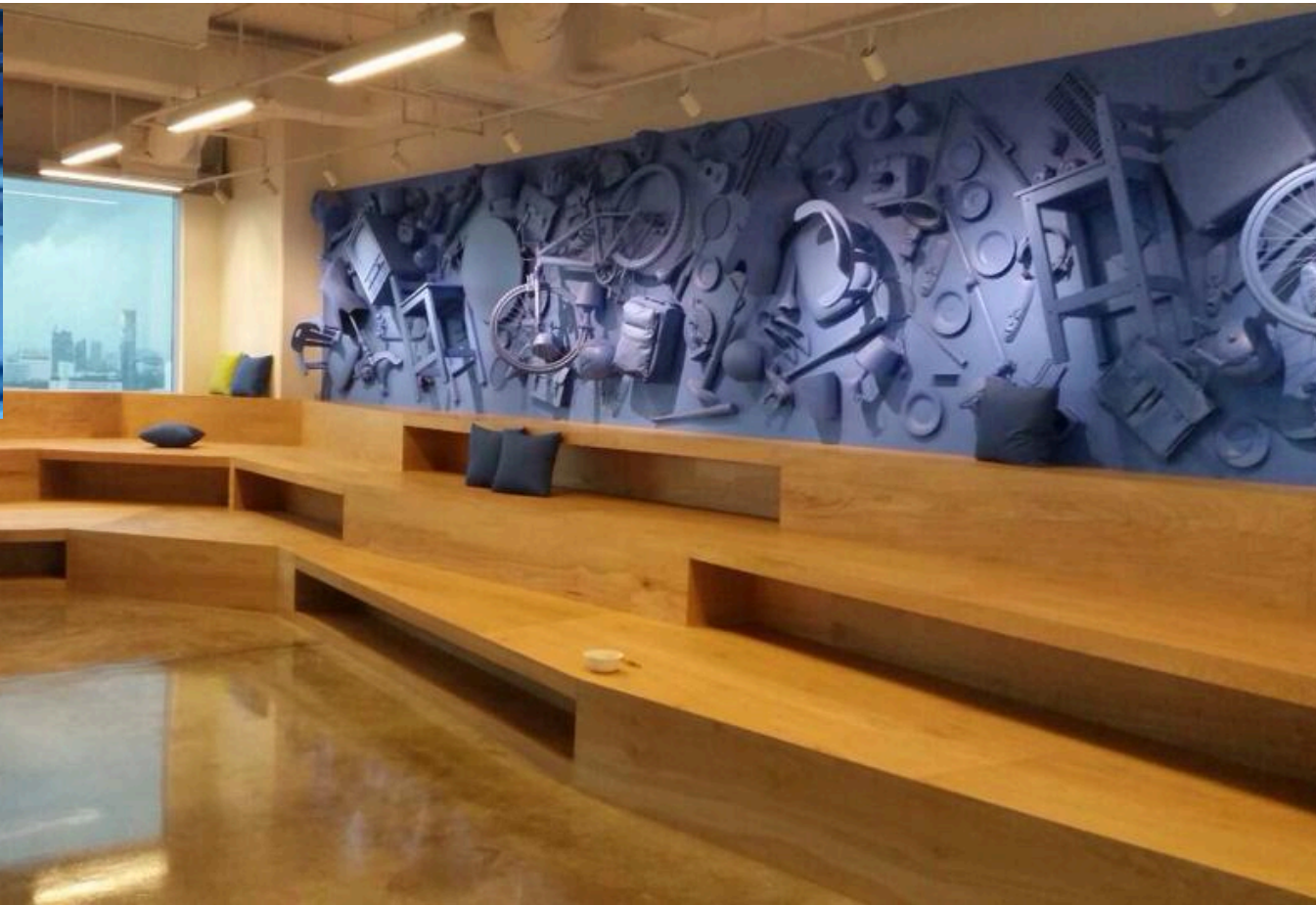




KAIDEE.COM OFFICE

Project: Kaidee.com
 Location: AIA Capital Center
 Area: approx 1,460 sq.m.
 Year: 2015
 Status: Completed





KAIDEE.COM OFFICE

Project: Kaidee.com
 Location: AIA Capital Center
 Area: approx 1,460 sq.m.
 Year: 2015
 Status: Completed

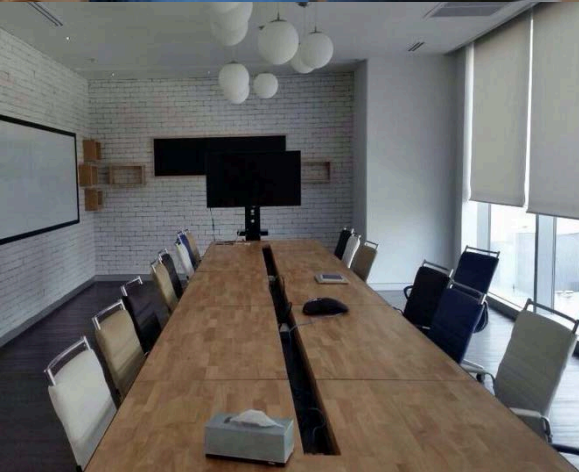




KAIDEE.COM OFFICE

Project: Kaidee.com
 Location: AIA Capital Center
 Area: approx 1,460 sq.m.
 Year: 2015
 Status: Completed





KAIDEE.COM OFFICE

Project: Kaidee.com
 Location: AIA Capital Center
 Area: approx 1,460 sq.m.
 Year: 2015
 Status: Completed





LINE OFFICE

Project : Line Office
 Location: Gaysorn Tower
 Area: Approx 3,000 sq.m.
 Year: 2017
 Status: Conceptual Design



LINE OFFICE

Project : Line Office
 Location: Gaysorn Tower
 Area: Approx 3,000 sq.m.
 Year: 2017
 Status: Conceptual Design



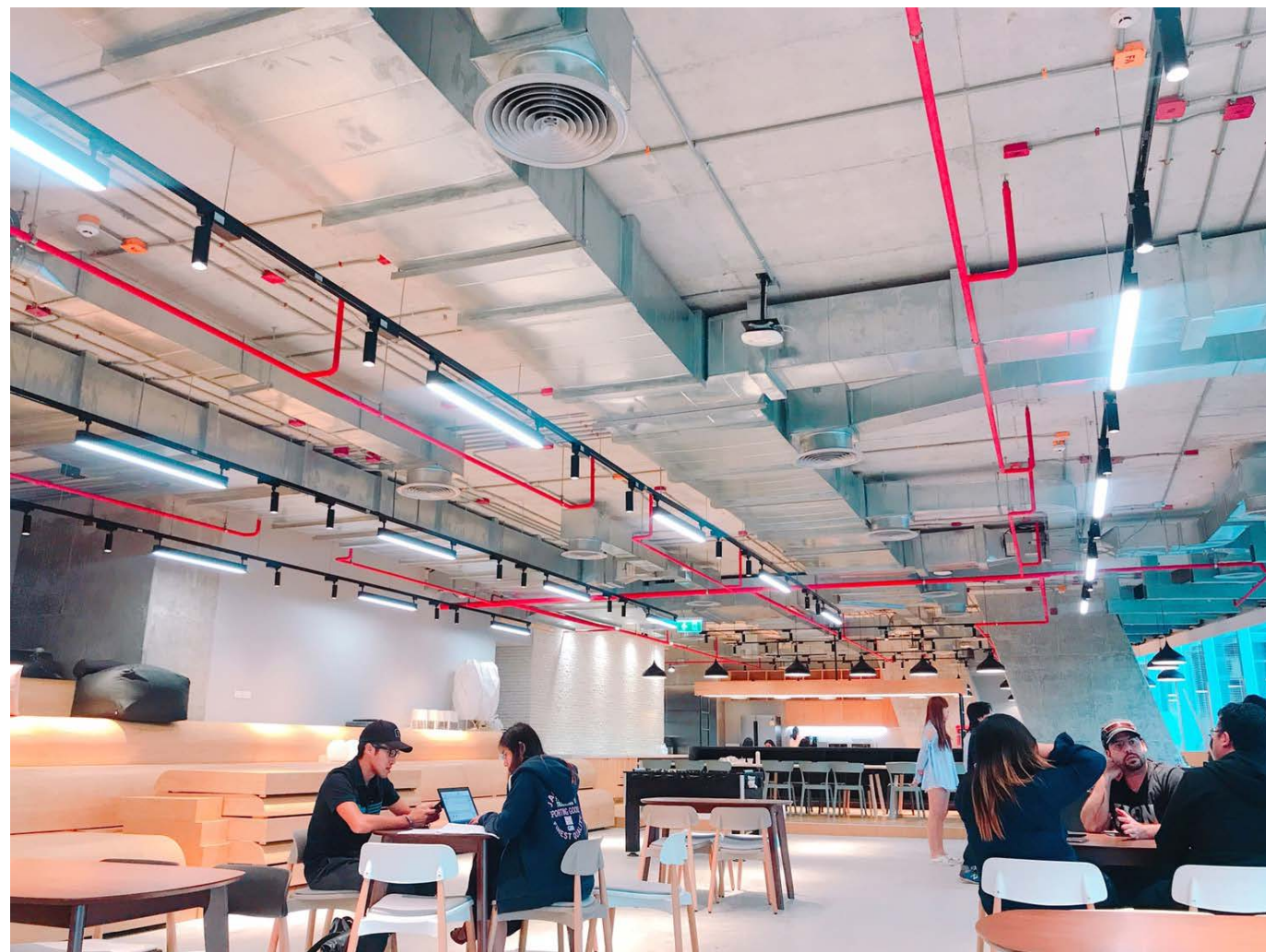
LINE OFFICE

Project : Line Office
 Location: Gaysorn Tower
 Area: Approx 3,000 sq.m.
 Year: 2017
 Status: Conceptual Design



TENCENT OFFICE

Project : Temcent Office
Location: T1 Building, Sukhumvit 40
Area: Approx 3,500 sq.m.
Year: 2018
Status: Under construction



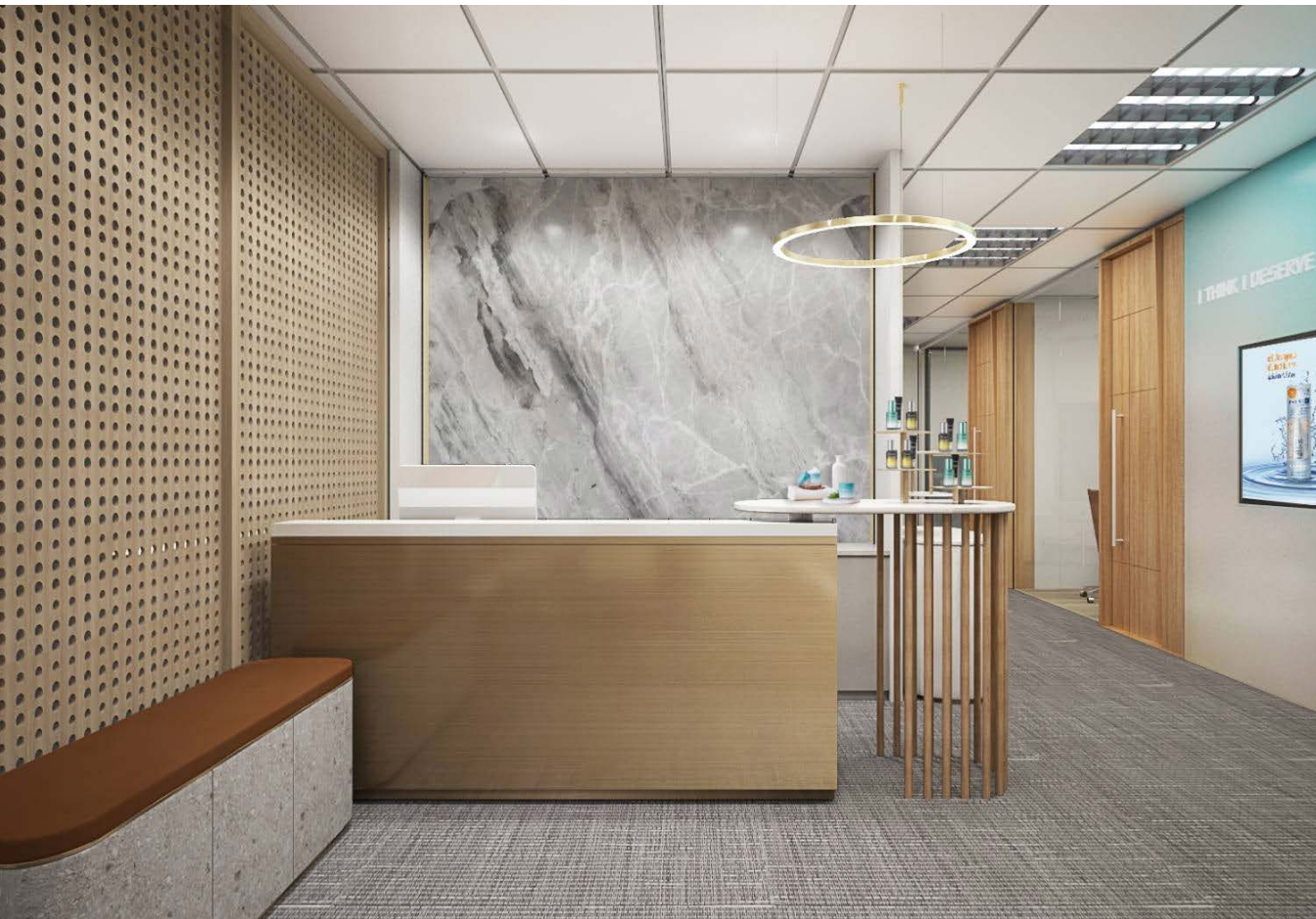
TENCENT OFFICE

Project : Temcent Office
Location: T1 Building, Sukhumvit 40
Area: Approx 3,500 sq.m.
Year: 2018
Status: Under construction



TENCENT OFFICE

Project : Temcent Office
 Location: T1 Building, Sukhumvit 40
 Area: Approx 3,500 sq.m.
 Year: 2018
 Status: Under construction



JS GLOBAL PART

Project: JS Global Part
 Location: All seasons place
 Area: approx 200 sq.m.
 Year: 2020
 Status: Completed





JS GLOBAL PART

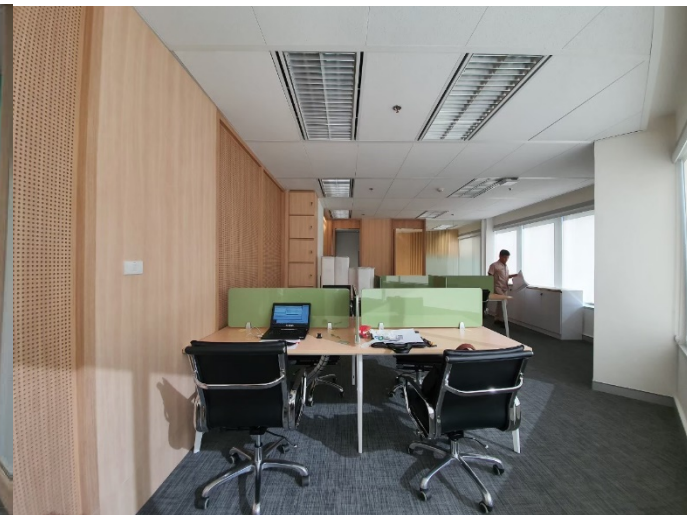
Project: JS Global Part
 Location: All seasons place
 Area: approx 200 sq.m.
 Year: 2020
 Status: Completed





JS GLOBAL PART

Project: JS Global Part
Location: All seasons place
Area: approx 200 sq.m.
Year: 2020
Status: Completed



JS GLOBAL PART

Project: JS Global Part
Location: All seasons place
Area: approx 200 sq.m.
Year: 2020
Status: Completed





ISUZU HUA CHIANG CHAN

Project: Isuzu hua chiang chan
Location: Chonburi
Area: approx 400 sq.m.
Year: 2019
Status: Under construction



ISUZU HUA CHIANG CHAN

Project: Isuzu hua chiang chan
 Location: Chonburi
 Area: approx 400 sq.m.
 Year: 2019
 Status: Under construction





OOZUU

Project: Oozuu
Location: T-one Building, Bangkok
Area: approx 600 sq.m.
Year: 2020
Status: Completed

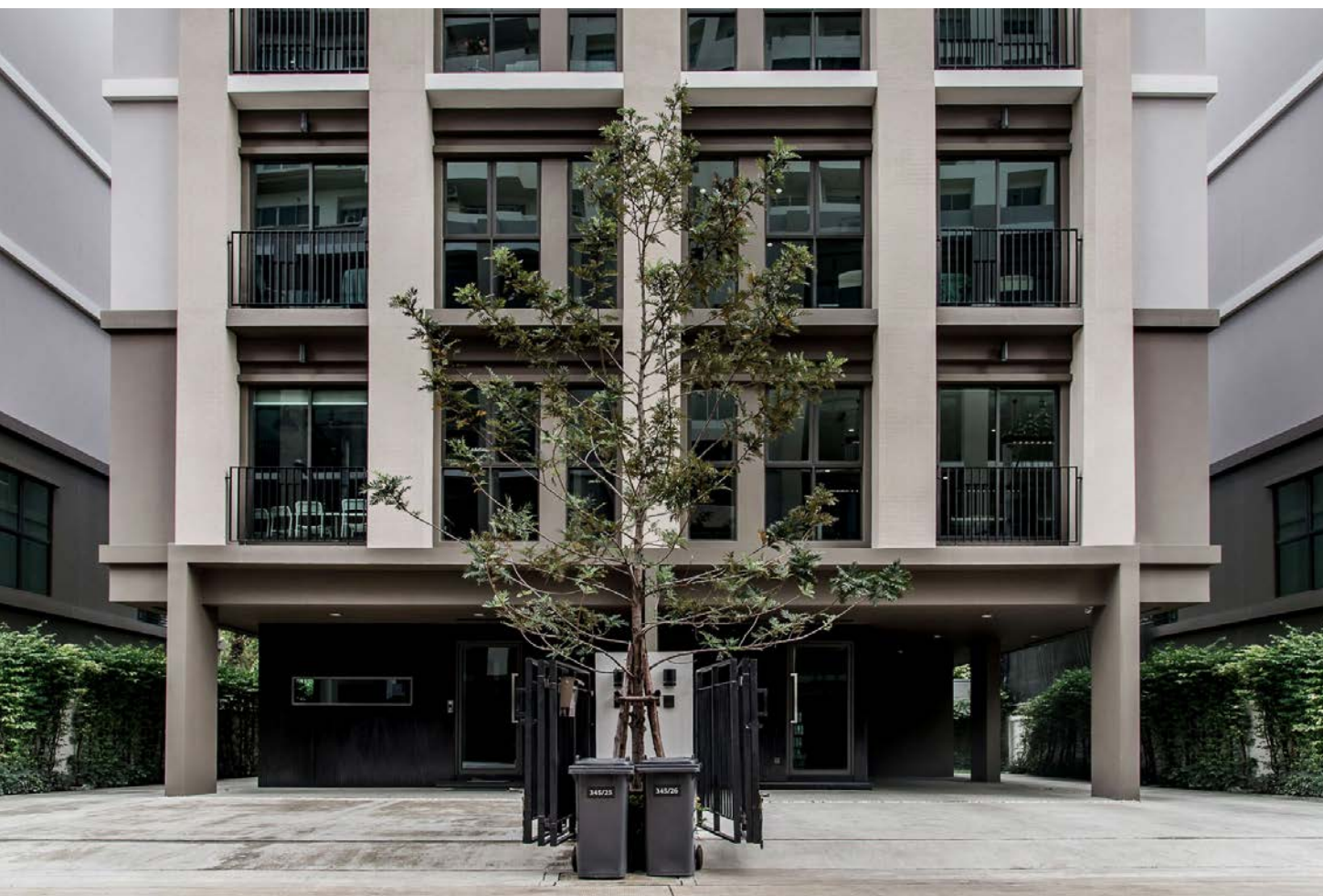




OOZUU

Project: Oozuu
 Location: T-one Building, Bangkok
 Area: approx 600 sq.m.
 Year: 2020
 Status: Completed





IC WEB HQ OFFICE

Project : IC web hq Office
 Location: Wang thonglang
 Area: Approx 600 sq.m.
 Year: 2018
 Status: Completed





IC WEB HQ OFFICE

Project : IC web hq Office
Location: Wang thonglang
Area: Approx 600 sq.m.
Year: 2018
Status: Completed



IC WEB HQ OFFICE

Project : IC web hq Office
Location: Wang thonglang
Area: Approx 600 sq.m.
Year: 2018
Status: Completed



IC WEB HQ OFFICE

Project : IC web hq Office
 Location: Wang thonglang
 Area: Approx 600 sq.m.
 Year: 2018
 Status: Completed



-ISM OFFICE

Project : -ism Office
 Location: Ratchathewi
 Area: Approx 470 sq.m.
 Year: 2017
 Status: Completed



-ISM OFFICE

Project : -ism Office
Location: Ratchathewi
Area: Approx 470 sq.m.
Year: 2017
Status: Completed



-ISM OFFICE

Project : -ism Office
 Location: Ratchathewi
 Area: Approx 470 sq.m.
 Year: 2017
 Status: Completed



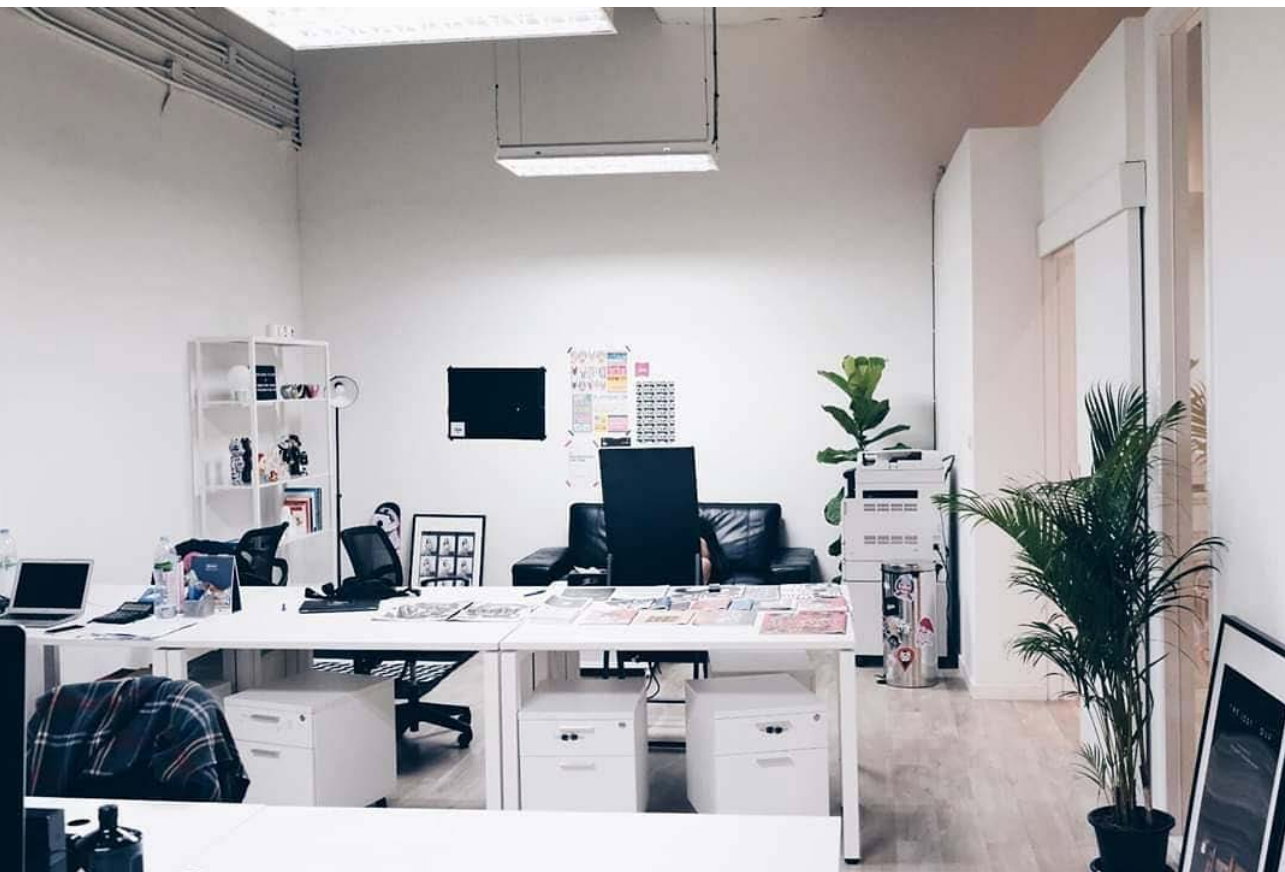
-ISM OFFICE

Project : -ism Office
Location: Ratchathewi
Area: Approx 470 sq.m.
Year: 2017
Status: Completed



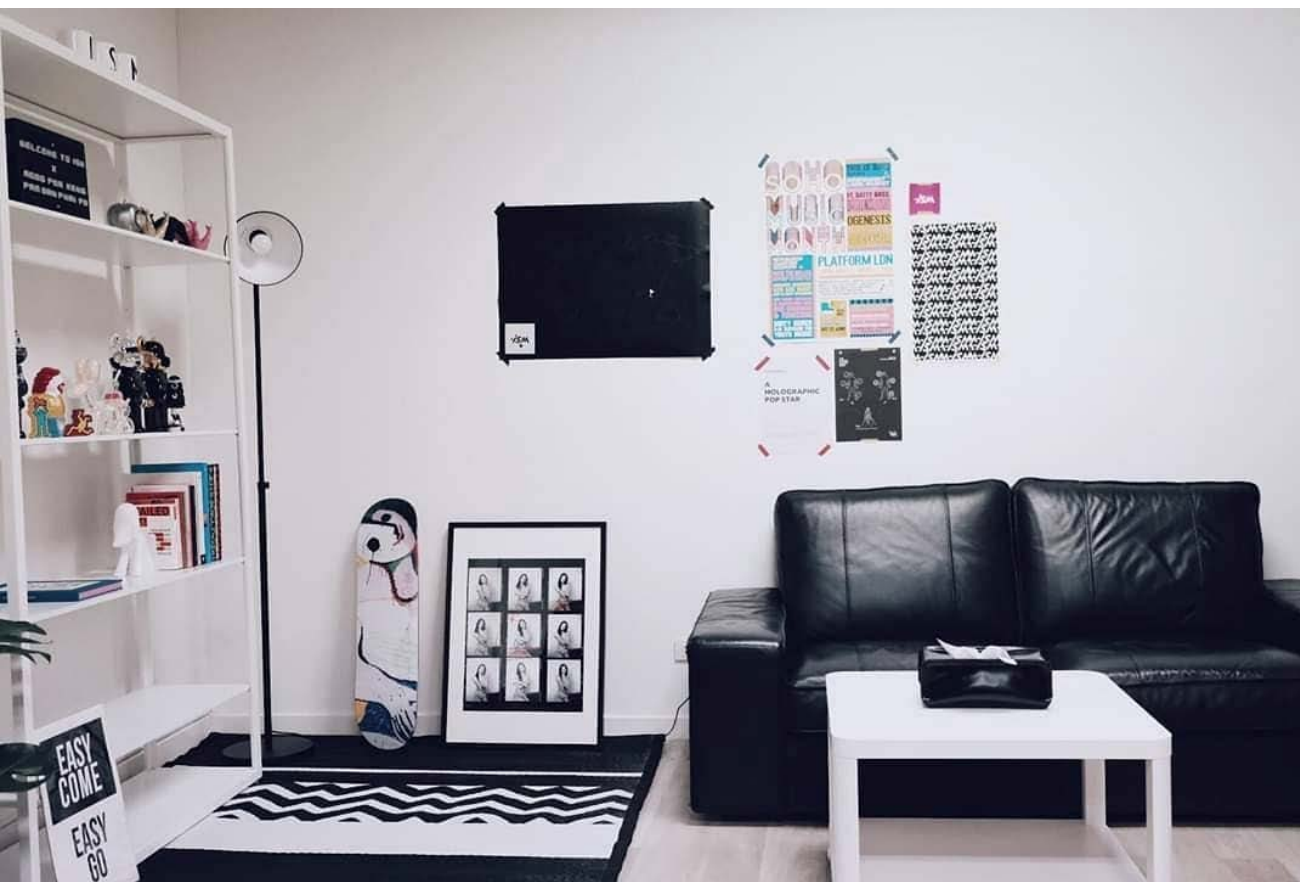
-ISM OFFICE

Project : -ism Office
 Location: Ratchathewi
 Area: Approx 470 sq.m.
 Year: 2017
 Status: Completed



-ISM OFFICE

Project : -ism Office
 Location: Ratchathewi
 Area: Approx 470 sq.m.
 Year: 2017
 Status: Completed



-ISM OFFICE

Project : -ism Office
 Location: Ratchathewi
 Area: Approx 470 sq.m.
 Year: 2017
 Status: Completed



DNA HQ OFFICE

Project : Dna hq Office
Location: Phahonyothin 11
Area: Approx 300 sq.m.
Year: 2018
Status: Under construction



DNA HQ OFFICE

Project : Dna hq Office
 Location: Phahonyothin 11
 Area: Approx 300 sq.m.
 Year: 2018
 Status: Under construction



DNA HQ OFFICE

Project : Dna hq Office
 Location: Phahonyothin 11
 Area: Approx 300 sq.m.
 Year: 2018
 Status: Under construction



DNA HQ OFFICE

Project : Dna hq Office
 Location: Phahonyothin 11
 Area: Approx 300 sq.m.
 Year: 2018
 Status: Under construction



PICTURE THIS STUDIO

Project : Picture This Studio @ Thonglor - Sukhumvit
Area: Approx 1,500 sq.m.
Year: 2014
Status: Completed



PICTURE THIS STUDIO

Project : Picture This Studio @ Thonglor - Sukhumvit
 Area: Approx 1,500 sq.m.
 Year: 2014
 Status: Completed



PICTURE THIS STUDIO

Project : Picture This Studio @ Thonglor - Sukhumvit
 Area: Approx 1,500 sq.m.
 Year: 2014
 Status: Completed



IC WEB OFFICE

Project : IC Web Office
 Location: RCA – Rama 9
 Area: Approx 320 sq.m.
 Year: 2014
 Status: Completed





IC WEB OFFICE

Project : IC Web Office
Location: RCA – Rama 9
Area: Approx 320 sq.m.
Year: 2014
Status: Completed

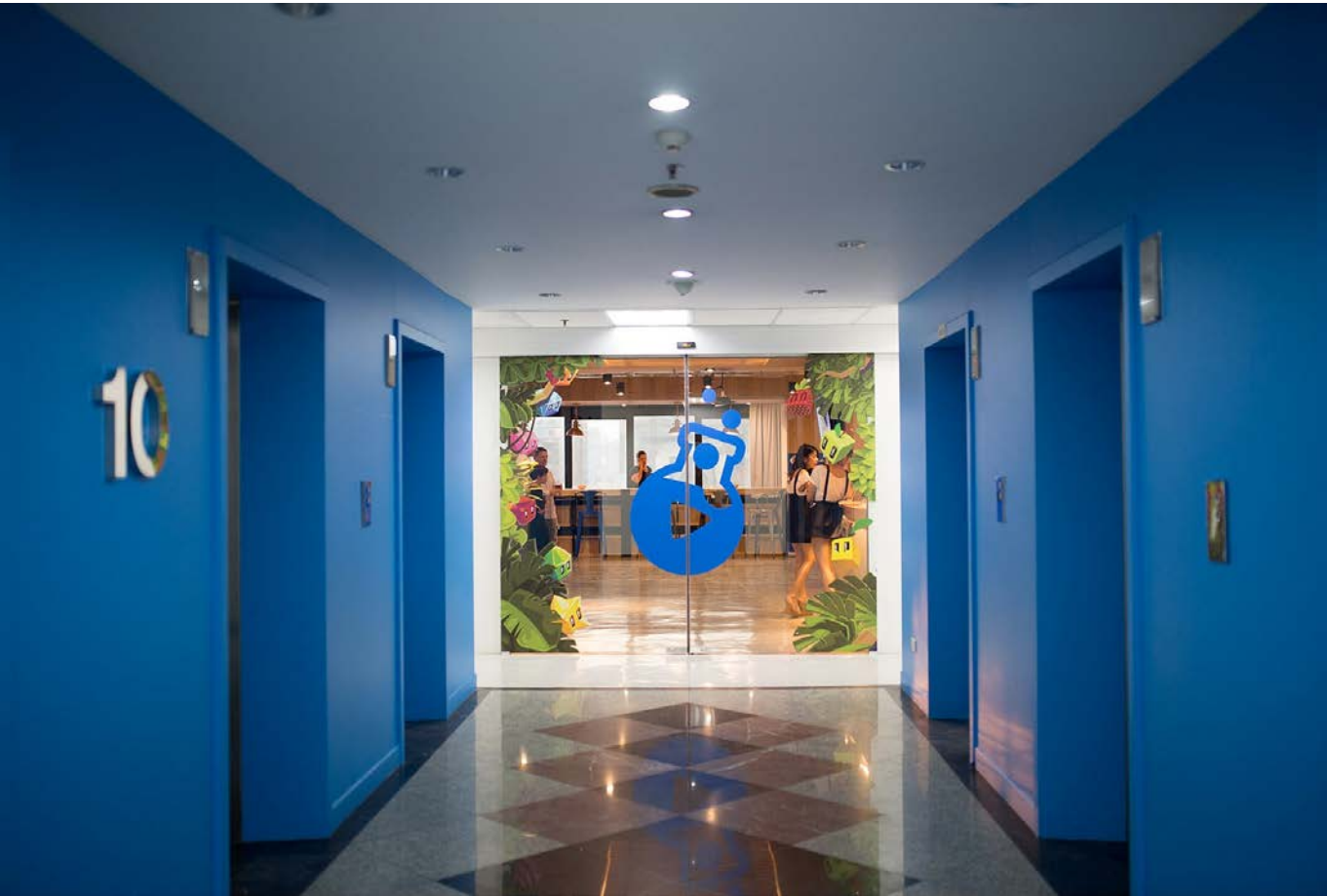




IC WEB OFFICE

Project : IC Web Office
Location: RCA – Rama 9
Area: Approx 320 sq.m.
Year: 2014
Status: Completed





POCKET PLAYLAB OFFICE

Project : Pocket PlayLab Office
 Location: Ekamai - Sukhumvit
 Area: Approx 840 sq.m.
 Year: 2014
 Status: Completed





POCKET PLAYLAB OFFICE

Project : Pocket PlayLab Office
 Location: Ekamai - Sukhumvit
 Area: Approx 840 sq.m.
 Year: 2014
 Status: Completed





POCKET PLAYLAB OFFICE

Project : Pocket PlayLab Office
 Location: Ekamai - Sukhumvit
 Area: Approx 840 sq.m.
 Year: 2014
 Status: Completed





AT VANTAGE OFFICE

Project : At Vantage Office
 Location: Property Perfect - Rama 9
 Area: Approx 238 sq.m.
 Year: 2014
 Status: Completed



MILEAGE AIR AND TRAVEL OFFICE

Project : Mileage air and travel (Home&Office)
 Location: Thanon Rama III
 Area: Approx 200 sq.m.
 Year: 2015
 Status: Completed





MILEAGE AIR AND TRAVEL OFFICE

Project : Mileage air and travel (Home&Office)
 Location: Thanon Rama III
 Area: Approx 200 sq.m.
 Year: 2015
 Status: Completed





TGA BANGKOK OFFICE

Project: RGA Bangkok Office
 Location: Pradipat - Phayathai
 Area: approx 300 sq.m.
 Year: 2013
 Status: Completed





E-SYNERGY OFFICE

Project: E-Synergy Office
 Location: Thai CC Building - Sathorn
 Year: 2013
 Status: Completed





we are Looking forward to achieve
the goal together with you.

ขอบคุณจากใจ

write us > goodlux@gmail.com

Call. +66 2 618 4677